

Figure 1: Live Births and Fertility Rate, 1909-2000

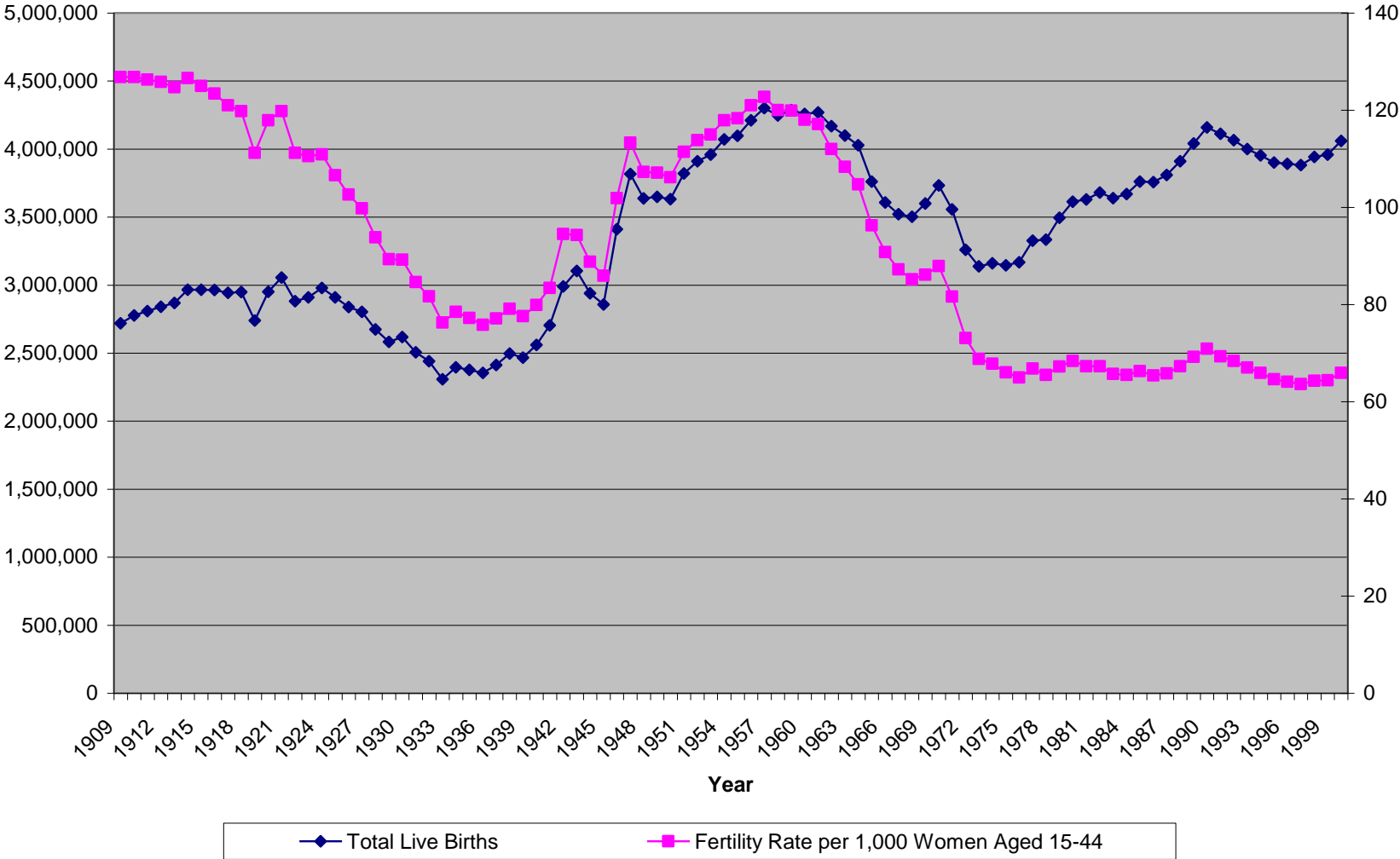


Figure 2: Life Expectancy at Age 20, 1900 - 2003

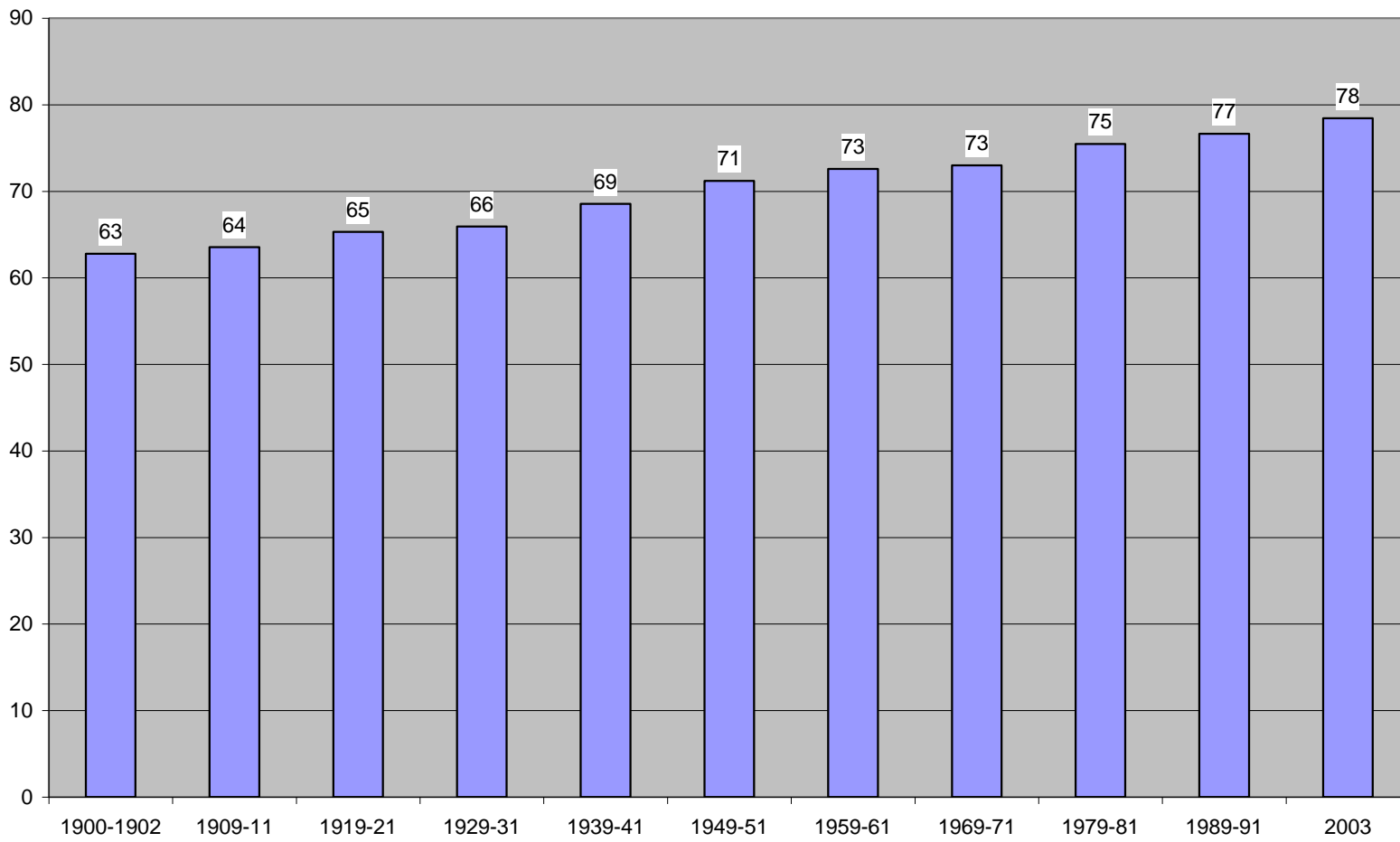


Table 1: Newly Naturalized Citizens, U.S. 1921-2000

Year	Total	Civilian	Military	Not
				Reported
1921-1930	1,773,185	1,716,979	56,206	-
1931-1940	1,518,464	1,498,573	19,891	-
1941-1950	1,987,028	1,837,229	149,799	-
1951-1960	1,189,946	1,148,241	41,705	-
1961-1970	1,120,263	1,084,195	36,068	-
1971-1980	1,464,772	1,397,846	66,926	-
1981-1990	2,214,265	2,155,519	28,317	30,429
1991-2000	5,619,892	5,159,520	28,945	431,427

<http://www.uscis.gov/graphics/shared/statistics/yearbook/YrBk04Na.htm>

**Figure 3: Age Distribution of Three Electorates, 1950, 1980, and 2000 Censuses
Native Born Citizens Only**

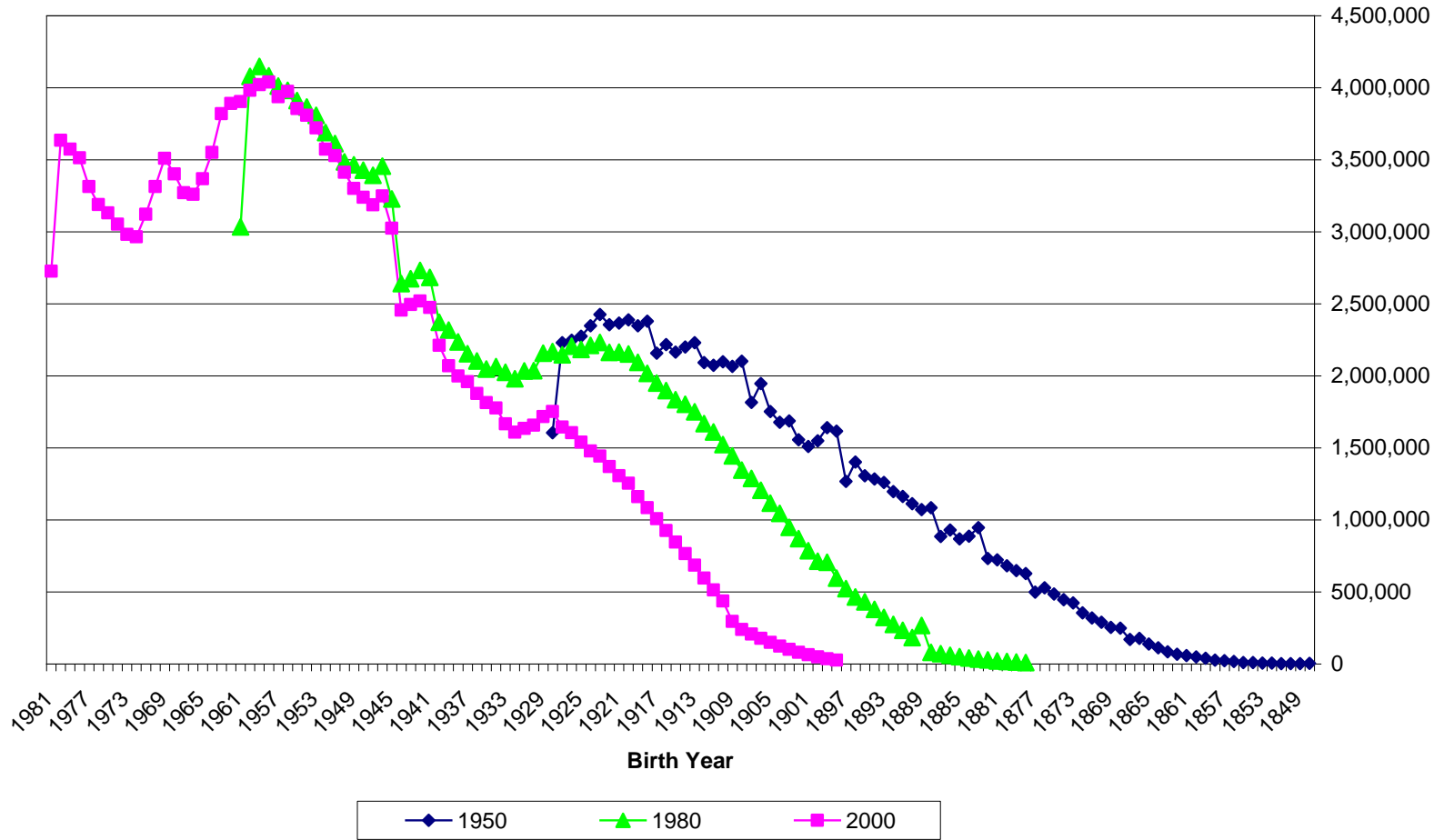


Table 2: Replacement of the Electorate, 1950 - 2000. Population Numbers in Millions. Adult Citizens Only

Line		1950	1960*	1970	1980	1990	2000
Part A: Total Adult Citizen Population		95.4	106.6	121.4	158.9	176.3	195.2
1	Native Born or Born Abroad of U.S. Parents	88.0	99.9	115.5	152.2	168.7	183.2
2	Naturalized	7.4	6.7	5.8	6.7	7.6	12.0
3	Mean/Median Age: Native Born	42/40	44/42	45/44	42/39	44/40	45/43
4	Mean/Median Age: Naturalized	56/56	57/60	59/62	54/55	50/47	49/47
	25-75 Percentile Age Range: Native Born	30-53	32-55	30-57	27-57	29-57	31-57
5	25-75 Percentile Age Range: Naturalized	47-65	48-69	46-72	37-72	35-65	36-61
Part B: Total Growth from Newly Eligible Citizens			21.1	28.3	50.7	35.9	37.7
6	Native Born Turning Voting Age Since Previously Listed Census		19.9	27.2	49.2	33.7	32.1
7	Newly Naturalized Adults Since Previously Listed Census (DHS)		1.2	1.1	1.6	2.2	5.6
Part C: Total Deaths and Emigration of Adult Citizens Since Preceding Census			9.9	13.5	13.2	18.5	18.8
8	Native Born		8.1	11.5	12.5	17.3	17.6
9	Naturalized		1.8	2.0	0.7	1.3	1.2
9a	Ratio, Newly Eligible Citizens to Deaths and Emigration		2.1	2.1	3.8	1.9	2.0
Part D. Percent Change Since 1950 Census							
10	All Citizens		12%	27%	67%	85%	105%
11	Native Born		13%	31%	73%	92%	108%
12	Naturalized		-9%	-21%	-10%	3%	63%
13	Percent of Electorate Composed of New and Newly Naturalized Voters Becoming Eligible After 1950		20%	41%	63%	77%	89%
14	Percent of 1950 Electorate Who Died or Emigrated Between 1950 and Indicated Census		10%	25%	38%	58%	78%

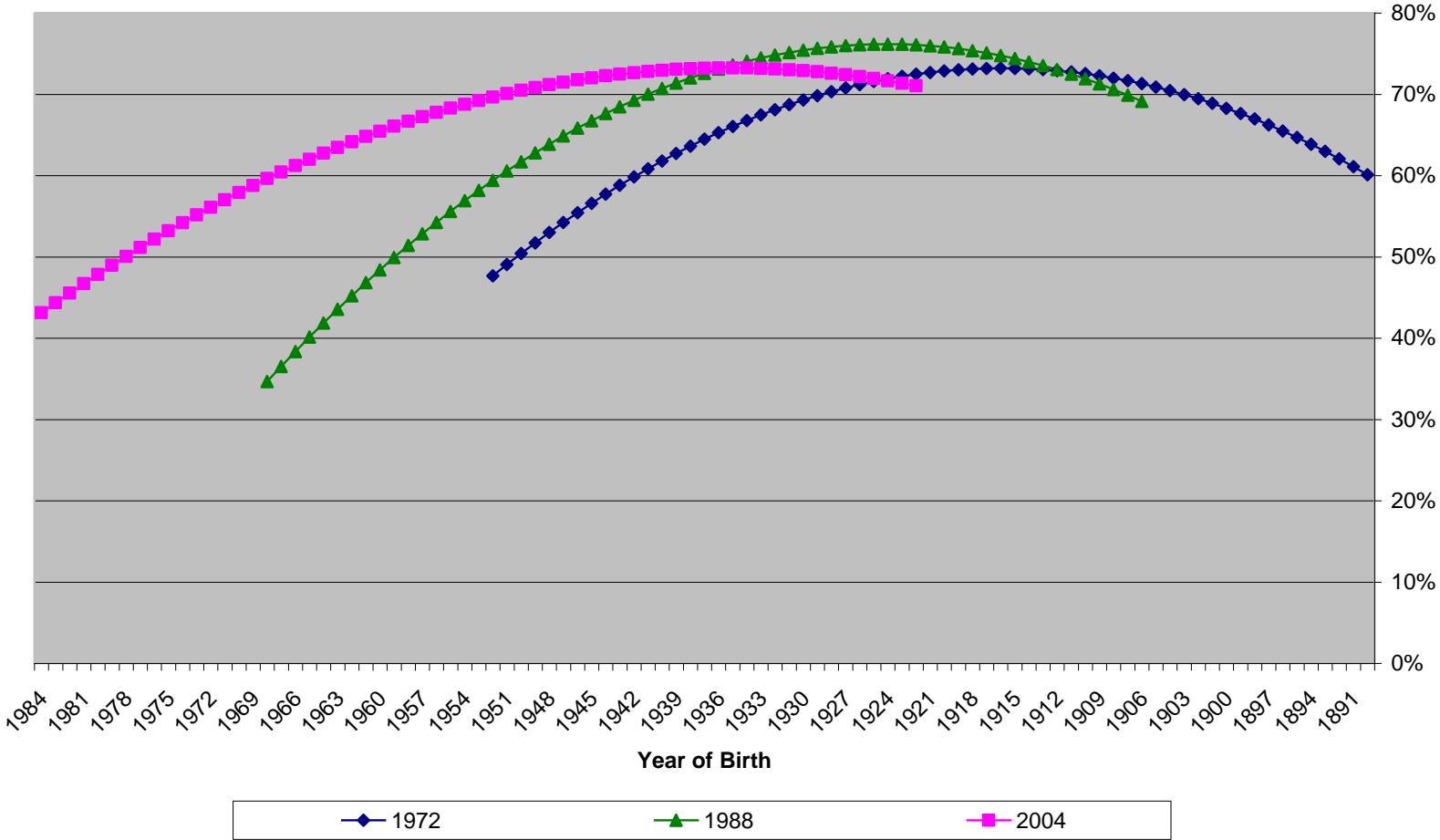
Table 3: Number and Percentages of Partisans by Age Cohort and By Election Pair. Native Born Citizens Only

Age Cohort; Decade of First Vote Eligibility	Election Pair	Party Identification. Leaning Independents Classified with Partisans							Census Cohort Totals
		Strong, Weak, and Leaning Democrats		Pure Independents		Strong, Weak, and Leaning Republicans		Missing Data on Party ID	
		Number (Millions)	Valid Percent	Number (Millions)	Valid Percent	Number (Millions)	Valid Percent	Number (Millions)	Number (Millions)
Born before 1930; First Eligible Before 1952	1952 Only	49.3	58.1%	4.7	5.6%	30.7	36.3%	3.3	88.0
	1960-62	41.4	54.3%	6.7	8.8%	28.1	36.9%	3.7	79.9
	1970-72	36.5	55.3%	6.5	9.8%	23.1	34.9%	1.1	67.1
	1980-82	30.4	57.9%	4.3	8.1%	17.8	34.0%	0.8	53.3
	1990-92	21.2	56.8%	2.8	7.5%	13.3	35.7%	0.4	37.7
	2000-02	13.0	57.1%	1.7	7.6%	8.1	35.4%	0.2	22.9
Born 1930-1939; First Eligible 1952-1960	1960-62	10.8	54.9%	2.0	10.4%	6.8	34.7%	0.8	20.4
	1970-72	10.5	49.8%	3.3	15.9%	7.2	34.4%	0.2	21.2
	1980-82	11.0	53.2%	2.1	10.0%	7.6	36.8%	0.1	20.8
	1990-92	10.6	54.6%	1.9	9.9%	6.9	35.5%	0.4	19.8
	2000-02	9.6	54.5%	0.8	4.8%	7.1	40.7%	0.2	17.7
Born 1940-1949; First Eligible 1962-1970	1970-72	14.5	52.6%	4.8	17.3%	8.3	30.0%	0.4	27.9
	1980-82	15.7	55.8%	3.7	13.2%	8.7	31.1%	0.8	28.9
	1990-92	14.6	52.9%	2.9	10.5%	10.1	36.6%	0.6	28.2
	2000-02	14.3	54.5%	1.7	6.3%	10.3	39.3%	0.7	26.9
Born 1950-1959; First Eligible 1972-1980	1980-82	24.2	50.2%	8.3	17.3%	15.7	32.6%	1.8	50.1
	1990-92	24.8	51.4%	5.6	11.5%	17.9	37.1%	1.0	49.3
	2000-02	23.4	48.3%	5.3	11.0%	19.7	40.7%	0.7	49.0
Born 1960-1969; First Eligible 1982-1990	1990-92	14.5	43.4%	5.8	17.4%	13.1	39.2%	0.9	34.4
	2000-02	13.6	40.6%	3.9	11.5%	16.1	47.9%	0.9	34.5
Born 1970-1979; First Eligible 1992-2000	2000-02	17.4	54.4%	4.8	14.9%	9.9	30.7%	0.8	32.9

Table 4: Number and Percentages of Partisans by Age Cohort and By Election Pair. Native Born Citizens Only

Age Cohort; Decade of First Vote Eligibility	Election Pair	Party Identification. Leaning Independents Classified with Independents							Census Cohort Totals
		Strong and Weak Democrats		Leaning Partisans and Pure Independents		Strong and Weak Republicans		Missing Data on Party ID	
		Number (Millions)	Valid Percent	Number (Millions)	Valid Percent	Number (Millions)	Valid Percent	Number (Millions)	Number (Millions)
Born before 1930; First Eligible Before 1952	1952 Only	40.8	48.2%	19.7	23.2%	24.2	28.6%	3.3	88.0
	1960-62	39.5	48.6%	16.6	20.4%	25.2	31.0%	3.9	85.2
	1970-72	31.4	47.5%	15.9	24.1%	18.7	28.4%	1.1	67.1
	1980-82	26.1	49.8%	12.7	24.2%	13.7	26.0%	0.8	53.3
	1990-92	17.6	47.2%	10.0	26.7%	9.8	26.1%	0.4	37.7
	2000-02	10.1	44.2%	6.8	29.9%	5.9	25.9%	0.2	22.9
Born 1930-1939; First Eligible 1952-1960	1960-62	8.3	42.2%	6.3	32.1%	5.0	25.7%	0.8	20.4
	1970-72	8.1	38.6%	8.2	38.9%	4.7	22.5%	0.2	21.2
	1980-82	8.9	43.1%	6.1	29.4%	5.7	27.5%	0.1	20.8
	1990-92	8.4	43.5%	6.3	32.2%	4.7	24.4%	0.4	19.8
	2000-02	7.2	41.3%	5.3	30.4%	5.0	28.3%	0.2	17.7
Born 1940-1949; First Eligible 1962-1970	1970-72	10.1	36.7%	12.7	46.0%	4.8	17.3%	0.4	27.9
	1980-82	12.1	43.1%	10.2	36.4%	5.7	20.4%	0.8	28.9
	1990-92	10.5	38.0%	10.3	37.3%	6.8	24.7%	0.6	28.2
	2000-02	10.5	40.0%	8.8	33.5%	6.9	26.5%	0.7	26.9
Born 1950-1959; First Eligible 1972-1980	1980-82	16.8	34.8%	21.3	44.2%	10.2	21.0%	1.8	50.1
	1990-92	18.0	37.2%	18.7	38.7%	11.6	24.1%	1.0	49.3
	2000-02	16.8	34.7%	17.9	37.1%	13.6	28.2%	0.7	49.0
Born 1960-1969; First Eligible 1982-1990	1990-92	8.4	25.1%	16.5	49.3%	8.6	25.6%	0.9	34.4
	2000-02	9.0	26.7%	13.5	40.0%	11.2	33.3%	0.9	34.5
Born 1970-1979; First Eligible 1992-2000	2000-02	10.0	31.2%	16.2	50.6%	5.8	18.2%	0.8	32.9

**Figure 4: Turnout by Birth Year, 1972, 1988, and 2004. CPS Surveys.
Fitted Equations for Age-Turnout Curve, Ages 18-80. Citizens Only**



Percent Support for Six Abortion Situations. GSS Surveys

